



Annual Report

May 1, 2010 through December 31, 2010

Pastor Ken Sunoo
Director of Children's Ministries Gina Topp
Music Director Ray Allan
Youth Director Ester Sihite
Nursery Caregiver Michelle Lai
Facilities Manager David Lang

1414 North 42nd Street
Seattle, WA 98103
206-632-0263
www.wallpc.org

WALLINGFORD PRESBYTERIAN CHURCH

2010 Annual Report – Table of Contents

Agenda of the 98th Annual Meeting	Page	1
Minutes from 2010 Annual Meeting	Page	2
Pastor’s Report – Ken Sunoo	Page	4
Session Reports		
Clerk’s Report	Page	6
Children’s Christian Education Report	Page	7
Adult Christian Education Report	Page	8
Mission Committee Report	Page	9
Nominating Committee Report	Page	11
Nurture and Fellowship Report	Page	12
Worship Committee Report	Page	13
Finance Committee		
Finance Committee Report	Page	14
FY2010 Budget v Actual and FY2011 Budget	Page	15
Balance Sheet Comparison: Dec 2010 versus Dec 2009	Page	17
Youth Group Report	Page	19
Deacons’ Report	Page	20
Property Committee Report	Page	21
Weekly and Yearly Attendance Chart	Page	23

**Wallingford Presbyterian Church
1414 N. 42nd Street
Seattle, WA 98103
(206) 632-0263
www.wallpc.org**

Agenda for the 98th Annual Meeting – February 13, 2011

Congregational Meeting

Blessing for the luncheon and table fellowship

Call to Order and Opening Prayer

Determination that a Quorum is Present

Reading of the Minutes of the last Congregational Meeting – June 6, 2010

Report of the Nominating Committee and Election of Officers

Elders, Deacons, Treasurer, Assistant Treasurer, Financial Secretary, Nominating
Committee

Financial Report for FY2010 (5/10 to 12/10)/ Presentation of the Budget for CY2011

Vote on Pastor's Terms of Call

Pastoral Remarks and Congregational Conversation: Looking Back, Looking Ahead

Open the Floor for any Additional Items for the Good of the Congregation

Motion to Adjourn and Closing Prayer

**Wallingford Presbyterian Church
Annual Congregational Meeting
Fellowship Hall
June 6, 2010**

Moderator: Rev. Ken Sunoo

A quorum was present. Meeting was convened with prayer at 12:05 p.m.

Motion: Laura McMillan moved to suspend the reading of the minutes from the May 17, 2009 meeting. Luz Toledo seconded. Motion approved.

Dale Brandenstein presented the nominating committee report.

Motion: Mason Freidline moved to elect the following new officers:

Elders: None

Deacons: Mike Coleman, Vicki Young, Shanti Garman, and Judy Sloniker

Nominating Committee: Dale Brandenstein, Susan Coupe, Wendy Fisher Grimm,
Doug Beck, Matt Garman, Danielle Shoemake, & Vicki Young

Treasurer: Kari Kelly

Assistant Treasurer: Heather Morriss

Financial Secretary: Dale Brandenstein.

Conor Eckert seconded. Motion approved.

Kari Kelly presented the Treasurer's Report for the May 1, 2009 to April 30, 2010 fiscal year, and presented the budget for the 2010 to 2011 fiscal year, and answered questions.

Donna DeCou replaced Rev. Ken Sunoo as Moderator. Ken Sunoo left the room, and the congregation reviewed the pastor's terms of call.

Motion: Rebecca Sunoo moved to accept the pastor's terms of call for the 2010-2011 fiscal year. Mason Friedline seconded. Motion approved.

Rev. Ken Sunoo returned as moderator.

Highlights from 2010

Rev. Ken Sunoo highlighted items from 2010, including: transition to one pastor; the Baptism of the Swiharts on Easter; *March to Holy Week* small group meetings; Confirmation Class with Ivy Beck, Conor Eckert, Mason Friedline and Rebecca Sunoo; Men's Breakfasts and Guy's Nights Out; upcoming Habitat for Humanity project with Magnolia PC; Progressive Dinner; Harvest Party; Mission activities, including Alternative Gift Fair, food drives and special offerings; the work of the Property

Committee led by Michael Friedline; WPC's excellent staff and volunteers; the Korean Glory Church and the use of the church by the neighborhood.

Rev. Ken Sunoo thanked the officers stepping down (Karen Nelson, Julie Young, and Phyllis Nelson) and the new officers listed above, and the Finance Committee.

Appreciative Inquiry

Anna St. Martin led the congregation in small group workshops reflecting on what the members appreciate about the church and how those hopes and dreams can be magnified and reflected in our daily activities at WPC. Each group presented the results of their discussions to the congregation.

Motion: Conor Eckert moved to adjourn the meeting with prayer. Mason Friedline seconded. Motion approved.

Meeting adjourned 1:25 p.m.

Respectfully submitted,

Rev. Ken Sunoo (Moderator)



Charlie Morriss (Clerk of Session)

Pastor's Report

It has been another exciting year of ministry here at WPC. Actually, it's more accurate to say that it's been an exciting 8 months or so, since Session has decided to transition our church back to a calendar schedule (from a May – April fiscal year). Even in this shortened time frame, God has richly blessed our church.

As for me, when I reflect on the last few months, a few elements particularly stand out:

- Welcoming the births of Ellie Garman and Michael Haley
- Commissioning our WPC youth for their mission trip to Campbell Farm last summer, and being so deeply impressed when upon their return they shared their experiences with us in worship with enthusiasm, humor, and eloquence
- Receiving four amazing youth into active membership at WPC via Confirmation: Ivy Beck, Conor Eckert, Mason Friedline, and Rebecca Sunoo
- Attending the Presbyterian Youth Triennium at Purdue University with five youth (Ivy Beck, Conor Eckert, Hans Engel, Mason Friedline, and Rebecca Sunoo) and Youth Director Ester Sihite
- Working with WPC's incredible staff: Music Director Ray Allan, CE Director Gina Topp, Youth Director Ester Sihite, Nursery Caregiver Michelle Lai, and Facilities Manager David Lang
- Looking forward to the continuation of a new small group program: "***March to Holy Week***," in which WPC will study C.S. Lewis' book *Mere Christianity* and which will culminate with worship on Good Friday.
- Giving thanks for the commitment our Deacons continue to demonstrate to our older members who are homebound and in nursing homes, ensuring they feel loved and remembered by their church family
- Singing joyfully along with our growing group of musicians on Sunday mornings
- Enjoying the first "Man Power" Habitat for Humanity event with men from the Magnolia Presbyterian Church, as well as the 2nd annual Harvest Party in the fall and the annual Christmas Pageant in December (kudos to Gina Topp for her hard work in planning and directing the Harvest Party as well as leading the pageant)
- Participating in engaging Bible studies and historical and theological discussions in our 9:15 Adult Sunday School class

- Admiring the tremendous support shown as a congregation for each of our Mission outreach projects, including the CROP Walk for Hunger in the fall, a generous outpouring of funds for each special offering and for our mini Alternative Gift Fair in November
- Appreciating the tireless efforts of our Property Committee – not only the constant energy required to keep our beautiful 1915 building functioning on a basic level, but their willingness to tackle larger scale projects like completing the brick work
- Completing a full year of sharing our worship space with the Korean Glory Presbyterian Church
- Being blessed with an international cast of Advent candle lighters, including people from N. Ireland (Heather Lynn), Japan (Kayo & Sakura Kamioka), and Cameroon (Martina Fomban)

Even as we reflect back on our past, we also know God has exciting work in store for us in the future. I look forward to continuing our partnership in ministry!

Grace and peace,
Rev. Ken Sunoo

Statistical Report of the Clerk – May through December, 2010

Membership as of April 30, 201061

Additions:

By Certificate of Transfer 0
By Reaffirmation of Faith 4
By Profession of Faith 0
Total Additions 4

Losses:

By Certificate of Transfer 0
By Death 0
By Transfer to Inactive Roll 0
Total Losses 0

Membership as of December 31, 201065

Infant Baptisms.....0
Adult Baptisms.....0
Weddings.....0
Funerals.....0
Communion served.....7 (monthly on first Sundays)

Elders serving on the Session:

Dale Brandenstein, Susan Coupe, Michael Friedline, Kari Kelly, Charlie Morriss,
Joe Roberts, Ben Sanders, Cay Shoemake

New members added to the roll:

Via Confirmation: Ivy Beck, Conor Eckert, Mason Friedline, Rebecca Sunoo

Respectfully submitted,
Charlie Morriss, Clerk of Session

Children's Christian Education

Children's Programs at 9:15:

Nursery: Our youngest children in the nursery give thanks to our new nursery caregiver Michelle Lai. We are so excited to have her faithfully serve in our nursery.

Kingdom Kids: This group of early readers has been challenged and has grown through reading the children's Bible aloud in a group and then interpreting what they have read. It has been a joy to see them progress in their reading abilities and comprehension of stories.

Body Builders 4th-8th have focused on a variety of different topics including Jonah and Joseph. We give thanks to all our dedicated Body Builder teachers including Ester Sihite and Ken Sunoo.

High School: 9th-12th joined the Body Builders in their study through Jonah. After Jonah this group was led through an overview of church history. We give thanks to all our dedicated High School teachers including Ester Sihite, Ken Sunoo, Michael Friedline and Laura Wideburg.

10:30 Worship Hour

Children's Worship: After the children's sermon preschool-3rd graders met downstairs in the Children's Worship room. We continued introducing children to worship in this class through the use of the curriculum, "Seasons of the Spirit." This curriculum explores the meaning and the mystery of the Bible through the lectionary. Thank you to all the volunteers who have helped downstairs during this hour.

Worship Discussion: 4th-8th graders remained in worship until after the sermon. This group then separated from the main congregation for a discussion on the sermon. Thanks to the leaders of this group Michael Friedline, Wendy Grimm and Mike Astion.

What We Look Forward To

We look forward to continued success in our 9:15am and 10:30 Children's Programs. Also a Communion Class will be offered this March as a large group of 3rd graders prepare to make the transition from downstairs worship to worship with the congregation.

In addition, we look forward to upcoming summer events, and another successful Easter Egg Hunt.

THANKS TO ALL WHO HAVE HELPED MAKE THIS YEAR A SUCCESS FOR OUR CHILDREN!

Respectfully submitted,

Gina Topp
Director of Children's Ministry

Adult Christian Education

We've had a number of interesting classes for our Adult Sunday School this year. We are very grateful to Laura Wideburg, who led classes in both the spring and fall on the Ancient World and the Bible.

Ongoing small groups include the Men's Breakfast Group led by Pastor Ken, as well as the group for women in their twenties/thirties led by Shanti Garman. During Lent, we plan to continue a program we began last year: ***March to Holy Week***, where small groups will meet for four weeks to discuss the book Mere Christianity by C.S. Lewis. ***March to Holy Week*** will culminate with the Good Friday service.

Respectfully submitted,

Ken Sunoo

Mission Committee Report

2010 was a generous year at Wallingford Presbyterian Church with regard to mission support. Our small church demonstrated time and again how closely to its heart it holds mission activities.

Transformation in WPC Mission budgeting

What we have seen in the past few years is a transformation in *how* our church funds mission causes, not a reduction in our total commitment to mission. Special offerings that target a particular cause, our Alternative Gift Fair, and multiple mission projects spearheaded by WPC members continue to be VERY successful.

By decreasing budgeted amounts from the general fund (supported mostly by weekly giving in the offering), we are helping focus general fund monies on our wonderful staff, which we believe frees up our members to participate in and lead the mission work we've seen throughout 2010.

Peacemaking and World Hunger

The 2010 Peacemaking Offering on World Communion Sunday was again a great success. \$1,172.00 was raised to support the people of Pakistan through the Presbyterian Disaster Assistance Fund.

WPC was again well represented in the Crop Walk, which is also held on World Communion Sunday. This year, instead of meeting in West Seattle, we gathered with other local congregations at Green Lake United Methodist Church and walked around Green Lake to demonstrate solidarity with and to raise awareness of people across the world that walk long distances to get basic food and water. With about thirty people from WPC walking, and contributions totaling \$865.00, we showed again our congregation's support for efforts to eliminate hunger and poverty worldwide.

The (Mini) Alternative Gift Fair

The 2010 Alternative Gift Fair was a "mini" version of past year's, but was again successful in raising significant amounts of money for each organization represented, as well as for our Youth mission activities.

Presbytery and General Assembly Unified Support

While we did reduce the amounts pledged in 2010, the Mission Committee and WPC session continued our commitment of support to local, regional, national, and global mission causes through pledges to Seattle Presbytery and the General Assembly. This year, we focused our giving to Presbytery in support of Pastor Binh Nguyen's Southeast Asia Ministries, and some adult members began considering mission work with this team.

Youth Mission Trip-A Huge Success

2010's youth trip to The Campbell Farm was a huge success, as our youth put in hours of hard work to support this unique rural ministry, while reporting that they received at least

as much as they put in. Our adult chaperones were moved to greater mission action as well.

Caring for People in Many Ways

Whether it was giving to the Christmas Joy Offering supporting Presbyterian pastors and their families, the Souper Bowl of Caring supporting efforts to end hunger locally and regionally, bringing in canned food, bringing in toiletries and socks and other items for various shelter support, bringing in crayons and other items and donating to support children's education supply purchases (\$2,366.00 raised), supporting community development projects through the One Great Hour of Sharing, moving tons of dirt for Habitat for Humanity, or volunteering at homeless feeding programs or shelters, the WPC congregation, both individually and collectively, demonstrated Christ's love in action in 2010.

What's next?

The 2011 Mission year will include continued support for local, regional, and global ministries. If there has been any recurring theme in WPC's Mission history, it has been the incredible dedication and creativity as the congregation approaches service to others. There seems to be still greater interest in adult mission opportunities, including a mission trip of some kind, so look for information about these opportunities in the coming year as well.

Mission Financial Dispersements:

The Mission Committee did not receive a designated budget this year, but specific offerings were taken for the CROP Walk, Peacemaking, and Christmas Joy. Funds were disbursed as listed below.

• <i>Presbytery Unified Support</i>	\$ 225.00
• <i>Peacemaking Offering</i>	\$ 1,172.00
• <i>CROP Walk 2010</i>	\$ 865.00
• <i>Christmas Joy Offering 2010</i>	\$ 634.00
• <i>Theological Education Fund</i>	\$ 150.00

Total Year FY2010 Dispersements: **\$ 2,046.00**

Additional generous offerings were collected:

- Children/Youth supply and activity funds - \$2,300.00
- Central Asia Institute - \$100 for Teacher Appreciation
- Bake Sale, Fair Trade Coffee, Raffle tickets raising \$670.00 for Mission Trips
- Binh Nguyen SE Asia Ministries - \$450.00

Respectfully submitted,

Ben Sanders, Mission Elder

2011 Nominating Committee Report – Wallingford Presbyterian Church

Three Year Terms

[The (1) or (2) after each name indicates whether this is a first (1) or second (2) term.]

	Class of 2011	Class of 2012	Class of 2013
Session:	Dale Brandenstein (2) Kari Kelly (1) Ben Sanders (1)	Susan Coupe (1) Joe Roberts (1) Charlie Morriss (2) Cay Shoemake (2)	Michael Friedline (1) <u>Kurt Swihart (1)</u> _____
Deacons:	Buckley Eckert (1) Bernd Schmidt (2) Vicki Young (1)	Nora Henrikson (1) Heather Morriss (1) Wendy Fisher Grimm (2)	Mike Coleman (1) Shanti Garman (2) Judy Sloniker (2)
Nominating:	Two from Session: One from Deacons: Four members at-large	<u>Dale Brandenstein & Susan Coupe</u> <u>Wendy Fisher Grimm</u> <u>Doug Beck, Matt Garman</u> <u>Danielle Shoemake, Vicki Young</u>	

One year Terms

Treasurer:	<u>Kari Kelly</u>
Assistant Treasurer:	<u>Heather Morriss</u>
Assistant Treasurer:	<u>Kurt Swihart</u>
Financial Secretary:	<u>Dale Brandenstein</u>

**Underlined names indicate to be elected*

Respectfully Submitted,

The WPC Nominating Committee

Dale Brandenstein, Chair
Susan Coupe
Matt Garman
Wendy Grimm
Danielle Shoemake
Vicki Young

Nurture and Fellowship Report

Thank you everyone for all you have done! WPC is one of the most nurturing congregations to be involved with. I have had comments from friends and other visitors about how welcome they feel when they are with us. Much of this continues to be our weekly coffee hour/fellowship times. Since the sign-up sheets to host Coffee Hour have returned, many who would not have volunteered have had the opportunity to serve their WPC family in a fairly simple manner.

Here are a few of the many activities we have enjoyed over the past year:

- Easter Breakfast
- Annual Picnic
- Alternative Gift Fair
- Small groups
- Annual meeting/potluck
- Progressive Dinner
- Youth Mission Trips
- Shared Worship and meal with the Korean Glory congregation

Here's to another wonderful year of caring and sharing at WPC.

Respectfully submitted,

Cay Shoemake
Nurture and Fellowship Chair

Worship Committee

I want to thank Joe Roberts and Rosemary Irvin for helping with worship committee this year. They and a great many other people deserve our thanks for the important roles they have played in our worship life as a congregation.

In December we held our 2nd annual Christmas Carol Jamboree, when the congregation gathered before the worship service on the Sunday before Christmas to drink hot chocolate and sing Christmas carols. Special thanks go to all of our talented musicians who led the Jamboree. It was a wonderful morning and a great time was had by all.

Our WPC youth have played significant roles in worship leadership this past year, from Confirmation Sunday to the services they led following their summer mission trip and the Presbyterian Youth Triennium.

Many of you have contributed to our worship life as worship leaders, greeters, ushers, children's time storytellers and communion servers.

We had a number of opportunities to worship with the Korean Glory Presbyterian Church, and we look forward to continuing to build our relationship with them.

Finally, our music ministry continues to evolve and excel under the leadership of our multi-talented Music Director, Ray Allen. It has been exciting to see more of our instrumentalists sharing their gifts regularly in worship this year; we make no secret of hoping for a similar trend among the many talented vocalists we have among us, in the year ahead!

- Ken Sunoo

Finance Committee Report

In today's economic environment it seems appropriate to start the financial report with a word of thanks for all of the good that WPC experienced in 2010. We were fully staffed throughout the year; we took care of our building and our people. We taught our kids and adults. We participated in mission events and giving opportunities locally, within the state, and provided support to countries miles away. We supported each other, welcomed new friends, and grew with God.

Making our budget starts with income. As we progressed throughout the year, our General Offering increased as a percentage of what was budgeted. Christmas offerings were very generous and we closed out 2010 at 99% of our budgeted General Fund income, as well as ending 2010 at 99% of our total budgeted income for May 2010 through December 2010. Thanks to everyone for your financial support!

In the expense column WPC did a good job staying within (and slightly below) budget ending the year at 97% of expenses. Given that nearly all of our expenses are fixed, it is encouraging that we finished under budgeted expenses. One item that was not paid out of our budgeted giving was our designated mission which was set at \$1,300.00. Instead, session voted to pay our mission giving from undesignated giving sources. Additionally, WPC gave generously to multiple designated mission causes.

The combination of hitting 99% of our income and 97% of our expenses resulted in a net positive income of \$1,877.00 as 2010 came to a close. This was great news for all. Having some additional dollars allowed session to designate \$305 toward outreach, \$500 toward designated mission, and \$1,072 will be carried into the CY2011 budget to assist with any unexpected expenses.

The CY2011 budget numbers remain similar to our FY2010 budget with the exception of staff salaries. In gratitude for the fantastic work our staff does at WPC, and also in recognition of the fact that salaries have not increased in two years, session voted to extend a 2% salary increase to each member of WPC's staff.

In looking ahead to CY2011 it is important that we continue to pray for our General Fund giving in quantity and consistency. We also gratefully acknowledge the Korean Glory Presbyterian Church for the partnership that we have in sharing our building and sharing our faith, and we are looking forward to continuing to grow that relationship in the future.

Thank you to Heather Morriss and Dale Brandenstein for their many, many hours of work as members of the Finance Committee. Their hard work is very much appreciated!

Respectfully submitted,

Kari Kelly, Treasurer

Wallingford Presbyterian Church					
Budget vs. Actuals: WPC Budget - FY11 P&L					
May - December, 2010					
	Actual 5/1 to 12/31/10	\$ Over Budget for 8 months	% of Budget	12 Mo Budget Amount 2010	2011 Budget
Income					
General Fund Income		0.00			
Building Use	4,900.00	168.00	1.04	7,100.00	7,500.00
General Offering	94,908.57	(987.43)	0.99	143,854.00	145,177.86
Investment Income	340.28	(191.72)	0.64	800.00	400.00
Manse Interest	84.42	(323.58)	0.21	612.00	573.02
Total General Fund Income	100,233.27	(1,334.73)	0.99	152,366.00	153,650.88
Total Income	100,233.27	(1,334.73)	0.99	152,366.00	153,650.88
Gross Profit	100,233.27	(1,334.73)	0.99	152,366.00	153,650.88
Expenses					
Bank Charges	(1.82)	(1.82)			
General Fund Expenses		0.00			
Administrative Expenses		0.00			
Ministerial Professional Exp	200.00	68.00	1.52	200.00	200.00
Office Supplies and Expense	2,299.60	(164.40)	0.93	3,700.00	3,700.00
Presbytery Per Capita	1,658.84	15.84	1.01	2,467.00	2,325.03
Telephone & DSL	865.18	39.18	1.05	1,242.00	1,200.00
Total Administrative Expenses	5,023.62	(41.38)	0.99	7,609.00	7,425.03
Christian Education		0.00			
Adult Education Supplies	57.12	1.12	1.02	86.00	86.00
Personnel		0.00		0.00	0.00
CE Director Salary	7,978.63	(513.37)	0.94	12,740.00	12,240.00
Nursery Care Salary	692.76	(917.24)	0.43	2,418.00	1,885.00
Youth Director Salary	3,649.49	553.49	1.18	4,644.00	4,420.00
Total Personnel	12,320.88	(877.12)	0.93	19,802.00	18,545.00
Total Christian Education	12,378.00	(876.00)	0.93	19,888.00	18,631.00
Deacons' Programs		(64.00)	0.00	100.00	100.00
Mission Committee		0.00			
Mission Causes		(1,332.00)	0.00	2,000.00	1,500.00
Total Mission Committee	0.00	(1,332.00)	0.00	2,000.00	1,500.00
Nurture & Fellowship	(105.84)	(305.84)	(0.53)	300.00	300.00

Pastor Expense		0.00			
Auto Allowance	175.75	(152.25)	0.54	500.00	500.00
Books	171.95	(28.05)	0.86	300.00	300.00
Continuing Education	1,000.00	336.00	1.51	1,000.00	1,000.00
Pastor Salary & Housing	41,628.75	460.75	1.01	61,752.00	63,479.00
Pension, Medical, Dental, L&I	14,178.44	450.44	1.03	20,598.00	21,840.93
Total Pastor Expense	57,154.89	1,066.89	1.02	84,150.00	87,119.93
Trustees		0.00			
Building Manager/Cleaning	8,332.18	144.18	1.02	12,280.00	12,747.96
Insurance	1,471.50	(528.50)	0.74	3,000.00	3,000.00
Mtc Supplies & Exp	1,039.87	(1,288.13)	0.45	3,500.00	2,500.00
Utilities	4,355.04	(644.96)	0.87	7,500.00	7,500.00
Total Trustees	15,198.59	(2,317.41)	0.87	26,280.00	25,747.96
Worship Committee		0.00			
Music Licensing & Supplies	510.00	246.00	1.93	400.00	550.00
Musicians	7,802.49	442.49	1.06	11,040.00	11,676.96
Pulpit Supply	150.00	(250.00)	0.38	600.00	600.00
Total Worship Committee	8,462.49	438.49	1.05	12,040.00	12,826.96
Total General Fund Expenses	98,111.75	(3,431.25)	0.97	152,367.00	153,650.88
Payroll Expenses	245.68	245.68		0.00	0.00
Total Expenses	98,355.61	(3,187.39)	0.97	152,367.00	153,650.88
Net Operating Income	1,877.66	1,852.66	75.11		

Wallingford Presbyterian Church Balance Sheet

As of December 31, 2010

	Total		
	As of Dec 31, 2010	As of Dec 31, 2009 (PY)	\$ Change
ASSETS			
Current Assets			
Bank Accounts			
CD-State Farm-1.72%-10/27/11-Endowment	15,647.99	15,382.69	265.30
CD-WaMu-1.75%-1/26/10 (1626-2)	0.00	18,676.22	(18,676.22)
CD-Wells Fargo-.25%	25,064.67	25,010.44	54.23
Fidelity Core Account	8,494.00	4,488.13	4,005.87
WaMu Checking	0.00	0.01	(0.01)
Wells Fargo Checking	7,412.72	15,601.35	(8,188.63)
Wells Fargo Savings	679.57	5,177.93	(4,498.36)
Total Bank Accounts	\$ 57,298.95	\$ 84,336.77	\$ (27,037.82)
Other Current Assets			
Marketable Securities			
			0.00
Calvert Fund-VL (CSIBX)	0.00	9,783.92	(9,783.92)
Fidelity Cash Reserves MM (FDRXX)	39,951.43	21,226.34	18,725.09
Fidelity Fund-Endow (FGRXX)	3,138.24	3,137.89	0.35
Fidelity Fund-VL (FSIIX)	3,037.21	(11,137.92)	14,175.13
Fidelity Fund-VL (FSLXX)	54,324.09	89,124.09	(34,800.00)
Fidelity Fund-VL (FSTGX)	45,317.21	53,552.45	(8,235.24)
Fidelity Fund-VL (FSTMX)	18,306.18	14,669.55	3,636.63
Fidelity Fund-VL (FTBFX)	52,449.59	59,751.57	(7,301.98)
iShares ETF-VL (IEI)	0.00	180.42	(180.42)
Parnassus Fund-VL (PRBLX)	7,245.66	9,058.41	(1,812.75)
Portfolio 21-VL (PORTX)	0.00	(4,478.66)	4,478.66
Total Marketable Securities	\$ 223,769.61	\$ 244,868.06	\$ (21,098.45)
Mission Development Certificate			
			0.00
Synod Alaska-NW-4.2%-12/01/07	5,036.83	5,000.00	36.83
Synod Alaska-NW-4.2%-6/30/07	14,271.09	14,271.09	0.00
Total Mission Development Certificate	\$ 19,307.92	\$ 19,271.09	\$ 36.83
Undeposited Funds	1,528.71	320.00	1,208.71
Total Other Current Assets	\$ 244,606.24	\$ 264,459.15	\$ (19,852.91)
Total Current Assets	\$ 301,905.19	\$ 348,795.92	\$ (46,890.73)
TOTAL ASSETS	\$ 301,905.19	\$ 348,795.92	\$ (46,890.73)
LIABILITIES AND EQUITY			
Liabilities			
Current Liabilities			
Other Current Liabilities			
Payroll Clearing	90.00		90.00
Payroll Liabilities	1,635.91	1,365.37	270.54
Payroll Tax Payable	916.63		916.63
Prepaid General Offering	287.58		287.58
Total Other Current Liabilities	\$ 2,930.12	\$ 1,365.37	\$ 1,564.75

Total Current Liabilities	\$	2,930.12	\$	1,365.37	\$	1,564.75
Total Liabilities	\$	2,930.12	\$	1,365.37	\$	1,564.75
Equity						
Funds						0.00
Building Improvement		0.00		0.00		0.00
Remodel rooms		0.00		4,277.38		(4,277.38)
Synod MDC - Restricted		5,036.83		5,000.00		36.83
Total Building Improvement	\$	5,036.83	\$	9,277.38	\$	(4,240.55)
Clearing Fund		252.17		252.17		0.00
Alternative Gift Fair		98.50		581.75		(483.25)
Anonymous Donation		15,715.16		25,000.00		(9,284.84)
CE Fund		1,715.25				1,715.25
Fellowship Meals		250.00		250.00		0.00
Korean Glory PC		250.00		250.00		0.00
Pastor Discretionary Fund		2,140.00				2,140.00
Retreats		912.68		1,199.92		(287.24)
Seasonal flowers		49.24		168.00		(118.76)
Technology		10,355.13		11,067.08		(711.95)
Total Clearing Fund	\$	31,738.13	\$	38,768.92	\$	(7,030.79)
Deacons' Fund		201.90		201.90		0.00
Designated Missions		0.00		0.00		0.00
Body Builders		108.35		108.35		0.00
Christmas Joy		634.00		664.00		(30.00)
Fair Trade Coffee		0.00		1,899.75		(1,899.75)
Local Hunger Programs		405.00		405.00		0.00
Mission Trip Fund		966.18		301.00		665.18
Peacemaking Offering		0.00		324.50		(324.50)
Souper Bowl		42.71		715.71		(673.00)
Synod MDC		14,271.09		14,271.09		0.00
Triennium 2010		34.77		365.00		(330.23)
Total Designated Missions	\$	16,462.10	\$	19,054.40	\$	(2,592.30)
Endowment Fund		18,786.23		18,520.58		265.65
General Fund		(4,206.08)		(4,206.08)		0.00
Investment Income, VL Proceeds		20,180.04		14,048.83		6,131.21
Memorial Fund		0.00		0.00		0.00
Unrestricted memorial		6,116.13		6,333.63		(217.50)
Total Memorial Fund	\$	6,116.13	\$	6,333.63	\$	(217.50)
Music Program		7,197.31		7,197.31		0.00
Princ Fund, Manse		23,105.32		27,956.98		(4,851.66)
Princ Fund, Vacant Lot		172,452.49		214,652.03		(42,199.54)
Total Funds	\$	297,070.40	\$	351,805.88	\$	(54,735.48)
Opening Bal Equity		0.13		0.00		0.13
Retained Earnings		(4,375.33)		(14,439.53)		10,064.20
Net Income		6,279.87		10,064.20		(3,784.33)
Total Equity	\$	298,975.07	\$	347,430.55	\$	(48,455.48)
TOTAL LIABILITIES AND EQUITY	\$	301,905.19	\$	348,795.92	\$	(46,890.73)
				Accrual Basis		

Middle & High School Youth Report

During 2010, we were blessed with Ester Sihite continuing as our part-time Youth Director. Ester has been a positive and loving presence for our youth during Sunday school and church, in addition to coordinating and leading youth events each month.

Highlights of 2010 include our fourth annual summer mission trip to Campbell Farm, in June, and the 2010 Triennium Trip for high school youth at Purdue University, in July. With the addition of six incoming middle school youth, we achieved a record-breaking attendance of sixteen youth at Campbell Farm, where they performed service work at the Yakima food bank, Union Gospel Mission and with the Wapato feeding/youth program. Attendance for Triennium was also an all-time high of five high school youth from WPC, who joined five thousand Presbyterian youth from across the country for what many reported as a life-changing spiritual experience.

A special thank you to parents Andrew Engel and Linda Eckert, who served as chaperones for our week-long summer mission trip, and to Ken Sunoo and Ester Sihite, who served as leaders and chaperones for both the mission trip and the Triennium trip.

Other 2010 youth trips included a weekend mini-retreat to Gig Harbor, in April, and a fall work party weekend at Campbell Farm, in October.

WPC youth held several fund raisers during 2010, in anticipation of our mission trips and retreats, including our second annual “Spaghetti Dinner and Variety Show” in April, a raffle & goodie sale during the WPC Fall Festival and our “Extreme Youth Bake Sale and Raffle,” in December.

The proceeds from the annual WPC Easter Breakfast were also donated towards our youth trips. A special thanks to Gene Dodd, Kari Kelly and Diana Johnson, who coordinated this special meal and donated the proceeds!

Lastly, a grateful thank you for the support of the many incredible parents and congregation members who chaperoned monthly youth activities, helped with youth events, and otherwise donated time, funds and creativity towards our youth program in 2010. This list became too long to attempt to include in the report this year. We could not offer a youth program without this vital involvement and support.

Respectfully submitted by Susan Coupe, Youth Elder

Deacons Report

We are excited to have some new members added to our group during this time period. Our board now consists of:

Wendy Fisher Grimm
Heather Morriss
Buckley Eckert
Judy Sloniker
Vicki Young
Mike Coleman
Nora Henrickson
Bernd Schmidt
Shanti Garman
Pastor Ken Sunoo - advisor

Members have various duties including sanctuary tending, visitation, hosts and hospitality, and kitchen patrol, as well as preparation and clean up of communion.

During our meetings, we share issues and concerns of our congregation and write personal notes and cards as appropriate, expressing appreciation, sympathy, and encouragement.

The deacons seek to offer the care and love of Christ to all those in the WPC congregation.

Respectfully submitted,

Judy Sloniker
Wendy Fisher Grimm
Co-Moderators

Property Committee Report

Committee Members: Michael Friedline, Chairman/ Mike Coleman, Jeff Henrikson, Gene Dodd

In November 2009, the church adjusted its governing structure. The Trustees were discontinued and replaced with a building committee. The chair of trustees joined the Session and chairs the new committee. Former trustees are now part of the building committee. This was done to cut administration and connect property management more directly to the Session.

Thank you David Lang: The Trustees would like to publicly recognize and thank David Lang our building manager. Not only does he clean to a very high standard, he has been incredibly reliable and often advises on repairs or issues concerning our building. We feel very fortunate to have such a professional manager on staff.

In 2009, major infrastructure work was completed thanks to available funding from the sale of the lot adjacent to the church parking lot. As many will remember, this was sold at the height of the market yielding approximately \$390,659 in revenue restricted to capital projects. We began restoring our exterior brick work, replaced our oil furnaces upgrading to natural gas, and installed a new roof on the building. The plan for 2010 was to undertake fewer large projects and focus more on interior repairs.

1. **New Windows:** On the Westside of the church (Green room. Women's bathroom, officers) our old aluminum single pane windows were replaced with vinyl double pane one that can also open for ventilation. Total cost was about \$4500. The old windows were worn out, leaking and not energy efficient.
2. **Completed Brickwork:** RC Masonry returned this year to clean out and install all new mortar between bricks, as well as acid wash and then put a preservative coating over them. This should protect and preserve the exterior for another 50 years.
3. **Repainted exterior trim:** Painters were hired to scrape, fills and repaint the outside trim. We had a great deal of peeling, and water was destroying the wood.
4. **Miscellaneous Repairs:**
 - a. Repainted choir loft and installed new banner hooks
 - b. Added and repaired electrical outlets in sanctuary
 - c. Repaired holes in walls around church
 - d. Hung new lights in classrooms and new bulbs for sanctuary
 - e. Repaired broken pews and installed new communion cup holders
 - f. Stopped leak near back downspout and repainted women's bathroom
 - g. Repaired exterior door locks
 - h. Added exterior lighting to protect against vandalism put on and damaging wal

Projects Goals for 2011

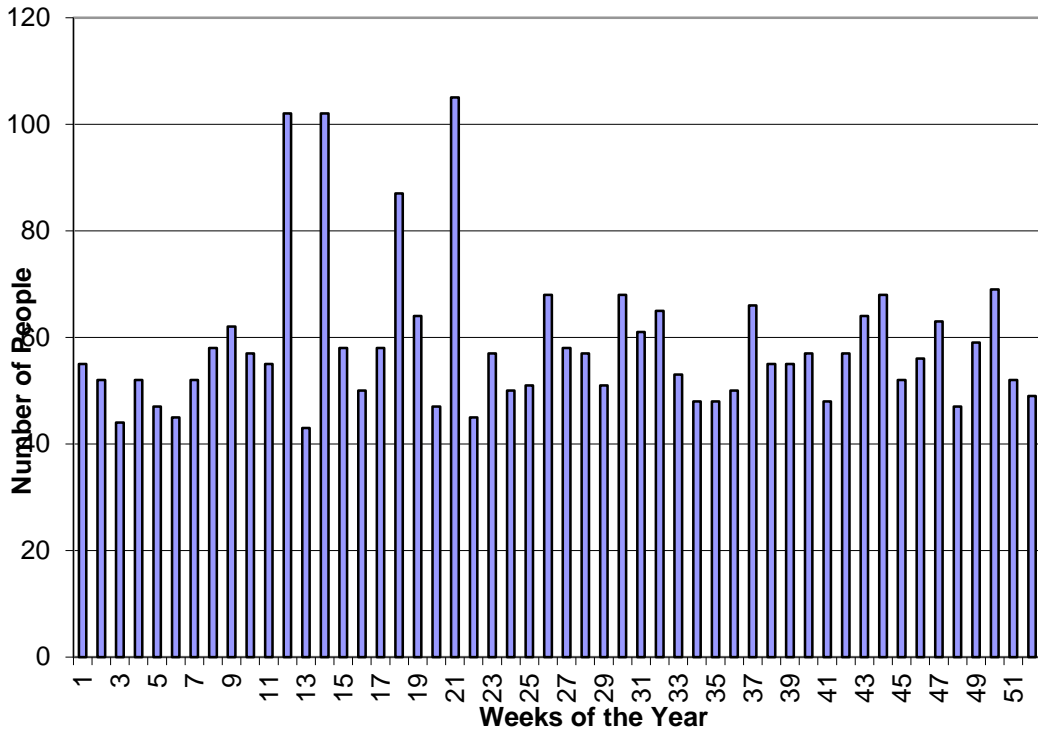
- Spring grounds clean-up (in partnership with Korean Glory)
- Removal and recycling the church organ and extra organ (and pipes)
- Installation of a new audio system and acquisition of an electronic keyboard
- Increase shelf capacity for the library
- Repaint selected interior walls
- Continue clean out of things that are no longer usable throughout the church
- Improve water drainage system
- Repair fence
- Hang banner rack

With regard to church building projects or issues, we welcome your suggestions or comments.....

Respectfully submitted,

Michael Friedline, Property Committee Chair

WPC Weekly Attendance 1/1/2010 through 12/31/2010



1986-2010 WPC Average Annual Attendance

